

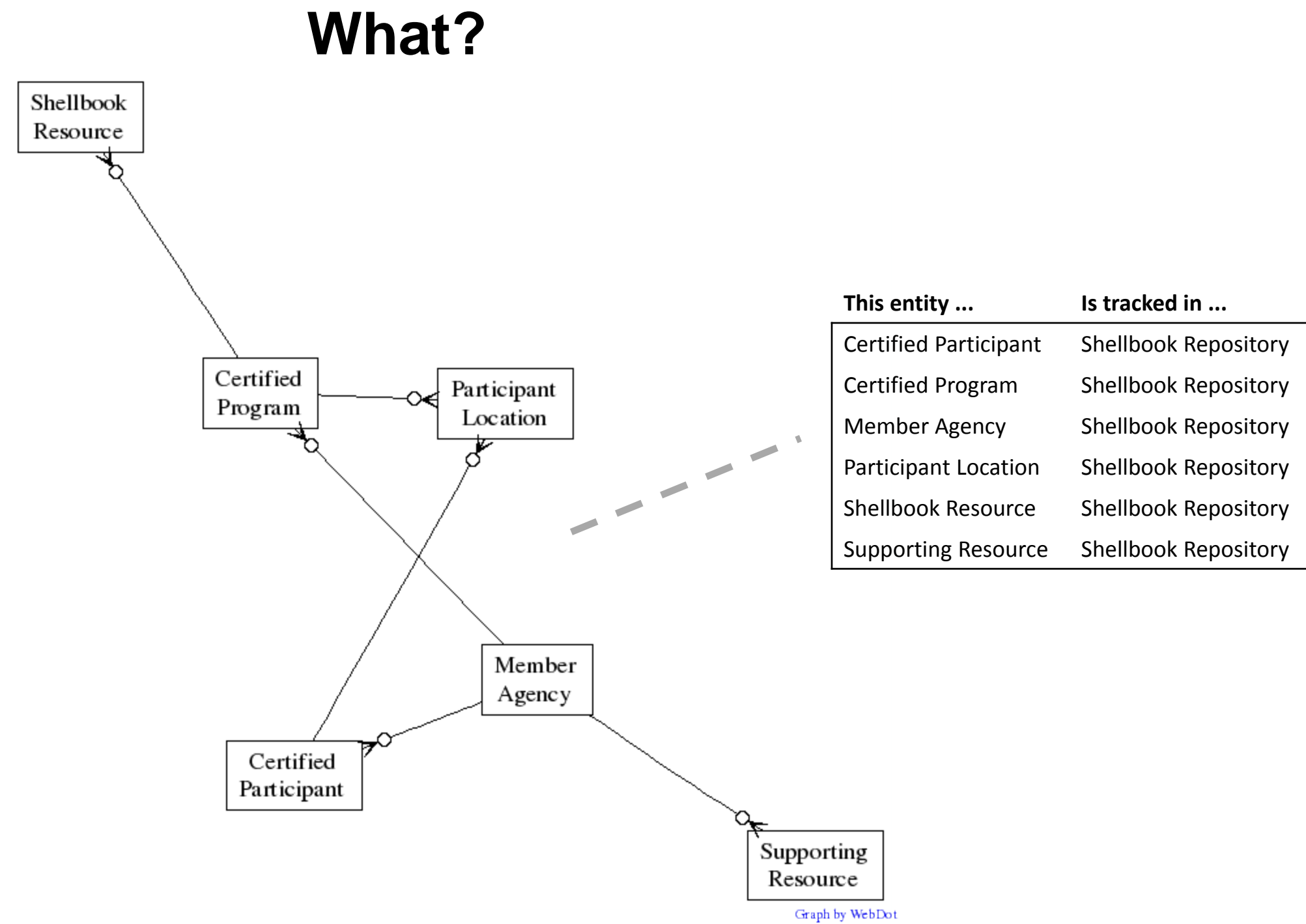
# Open Library for Local Learning Communities

U

Perspective: - 7 k #  
 Architect: Gary Simons, SIL International  
 Contributors: Mike Trainum, Life Access Technology Trust  
 Peter Clark, Arca Associates  
 Micael Olsson, World Vision International  
 Revision date: 2010-06-14

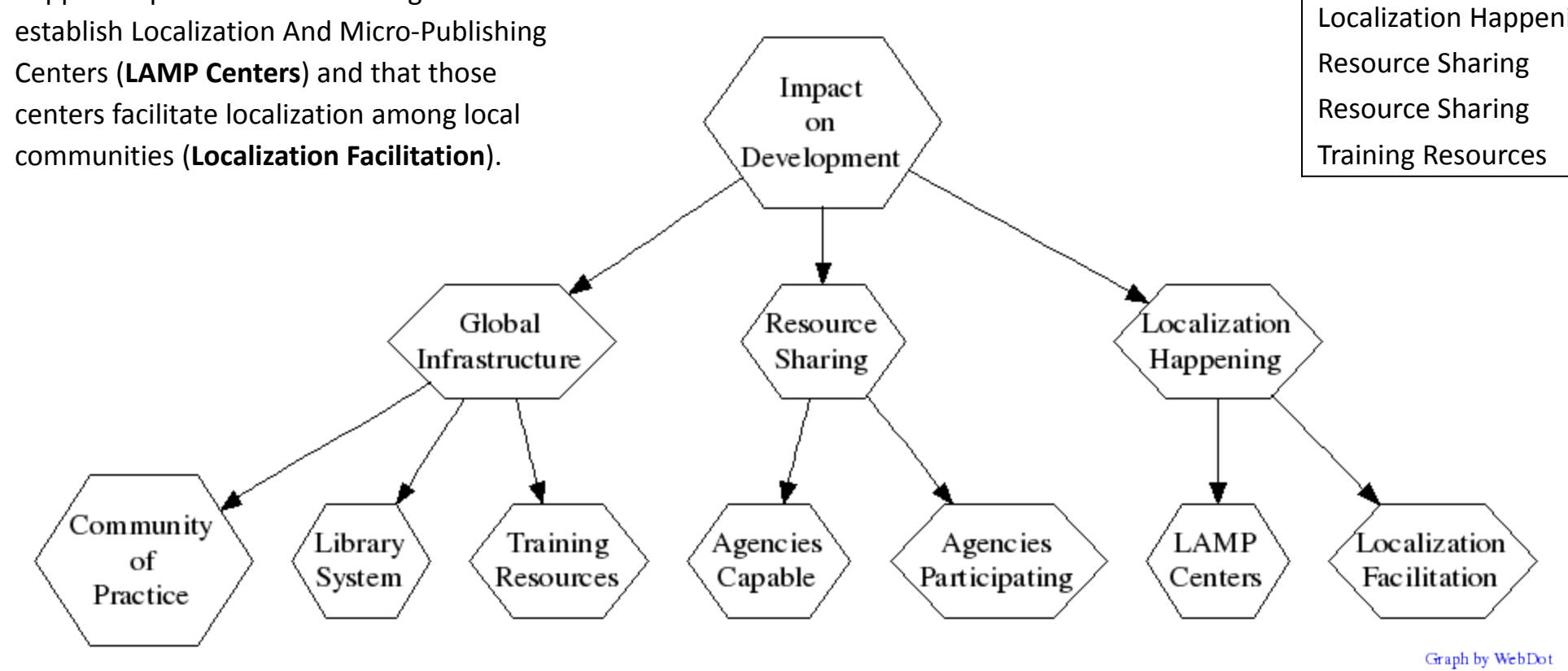
The Open Library for Local Learning Communities (OL3C) is an international partnership of agencies and individuals who are creating a worldwide virtual library to share teaching and learning materials in the Shellbook resource format. The aim is that any local community of practice or social network, especially those that have been bypassed by mainstream development efforts, may localize life-crucial information in terms of its own language, culture, ethnicity, gender, and/or age group. OL3C will also provide a collaborative environment for the research and development of localization resource standards, tools, and best practices, as well as research into the relationship of localization to language development and integral human development.

**Data Model:** For the sake of operating the Open Library itself, the OL3C must keep track of all available **Shellbook Resources**. For the sake of supporting the overall enterprise, the OL3C must track many other things. Central to this is the set of **Member Agencies**. Each Member Agency is then associated with the list of **Certified Programs** that it has established for developing Shellbook Resources, which are in turn linked to all the Shellbook Resources that it is responsible for creating and contributing. Each Member Agency is also associated with the list of **Certified Participants** among its personnel, which are in turn associated with particular Certified Programs by means of **Participant Location**. Member agencies may also contribute **Supporting Resources** that are shared with the other agencies to support the work of OL3C.



**Motivation Model:** The ultimate purpose of the OL3C is expressed in the **Impact on Development** statement that all "left out" people will be able to participate fully in the process of their own development in terms of their own language and other aspects of identity. For this purpose to be realized, three things are necessary: a **Global Infrastructure** for localization must be functioning, the source materials for local communities to localize must be available (**Resource Sharing**), and the communities must be localizing those resources and using the results to foster learning (**Localization Happening**). The infrastructure requires a **Library System** for the open sharing of resources and results, **Training Resources** that will help participants to learn what they must know to participate, and a **Community of Practice** to define and support best practices. The vision for Resource Sharing requires that all development agencies who are promoting localized learning are participating in the OL3C (**Agencies Participating**) and have the capacity to exploit all of its solutions (**Agencies Capable**). Finally, seeing localization happen requires that member agencies establish Localization And Micro-Publishing Centers (**LAMP Centers**) and that those centers facilitate localization among local communities (**Localization Facilitation**).

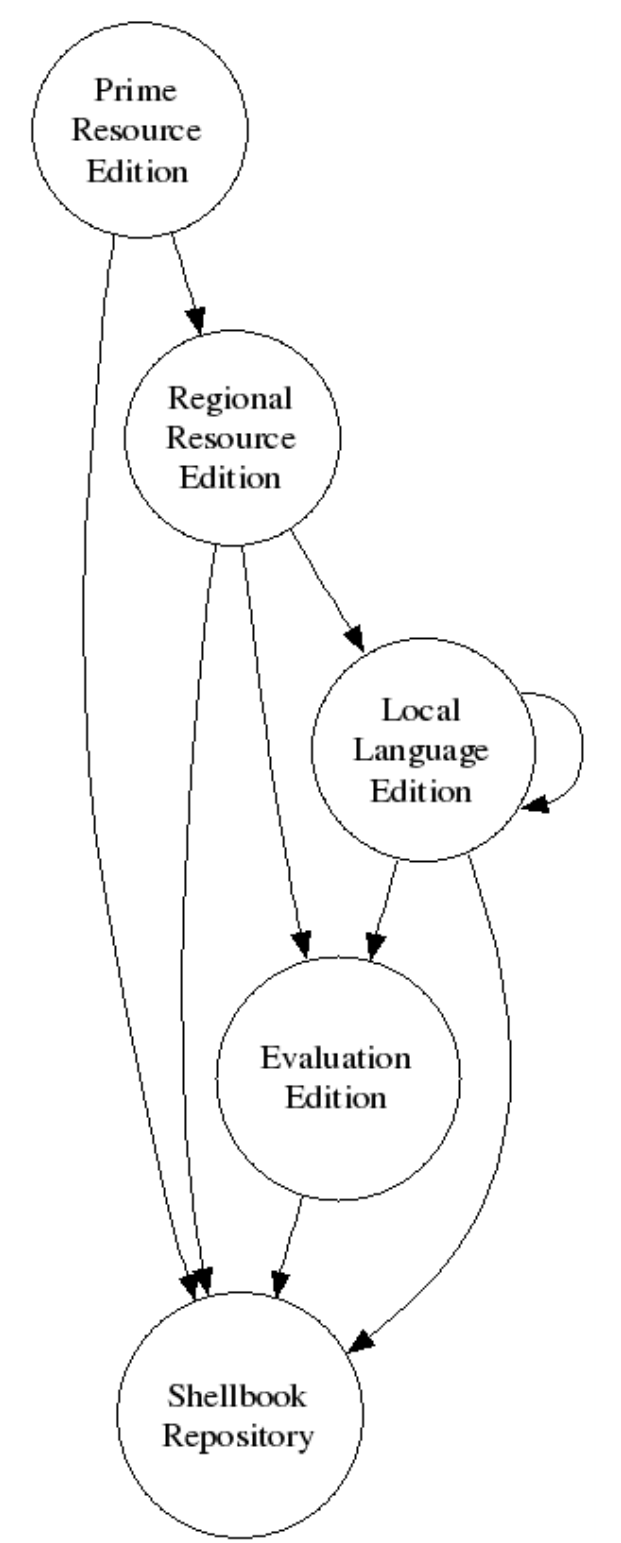
## Why?



**This objective ... Is the reason for ...**

Agencies Capable	Certified Participant
Agencies Capable	Origination Training Cycle
Agencies Capable	Regionalization Training Cycle
Agencies Participating	Member Agency
Agencies Participating	OL3C Agency
Community of Practice	OL3C Consortium
Global Infrastructure	Open Library
LAMP Centers	Certified Program
LAMP Centers	LAMP Center
LAMP Centers	LAMP Unit
Library System	Shellbook Repository
Localization Facilitation	Localization Training Cycle
Localization Happening	Learning Localization Cycle
Localization Happening	Local Language Edition
Resource Sharing	Prime Resource Edition
Resource Sharing	Regional Resource Edition
Training Resources	Supporting Resource

## How?

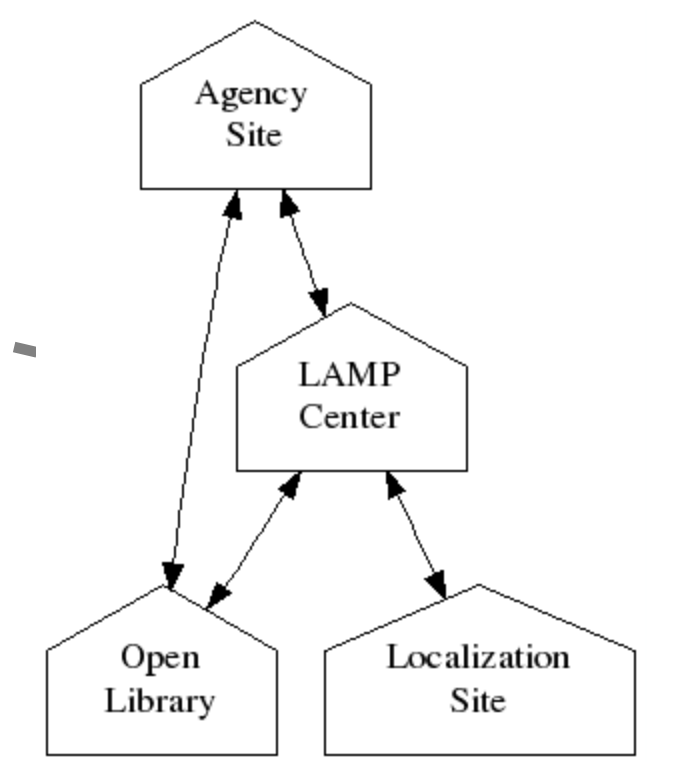


**Production Model:** The production model of the OL3C begins with **Prime Resource Editions**. These are the input to the process of deriving **Regional Resource Editions**, which in turn are the input to the process of deriving **Local Language Editions**. The latter two may also be the input to another kind of derivative which is an **Evaluation Edition** giving feedback on the edition. All of the above are the kinds of resources that enter into the process of maintaining the **Shellbook Repository**.

**This product ... Is produced at ...**

Evaluation Edition	Agency Site
Prime Resource Edition	Agency Site
Regional Resource Edition	Agency Site
Evaluation Edition	LAMP Center
Local Language Edition	LAMP Center
Evaluation Edition	Localization Site
Local Language Edition	Localization Site
Shellbook Repository	Open Library

## Where?



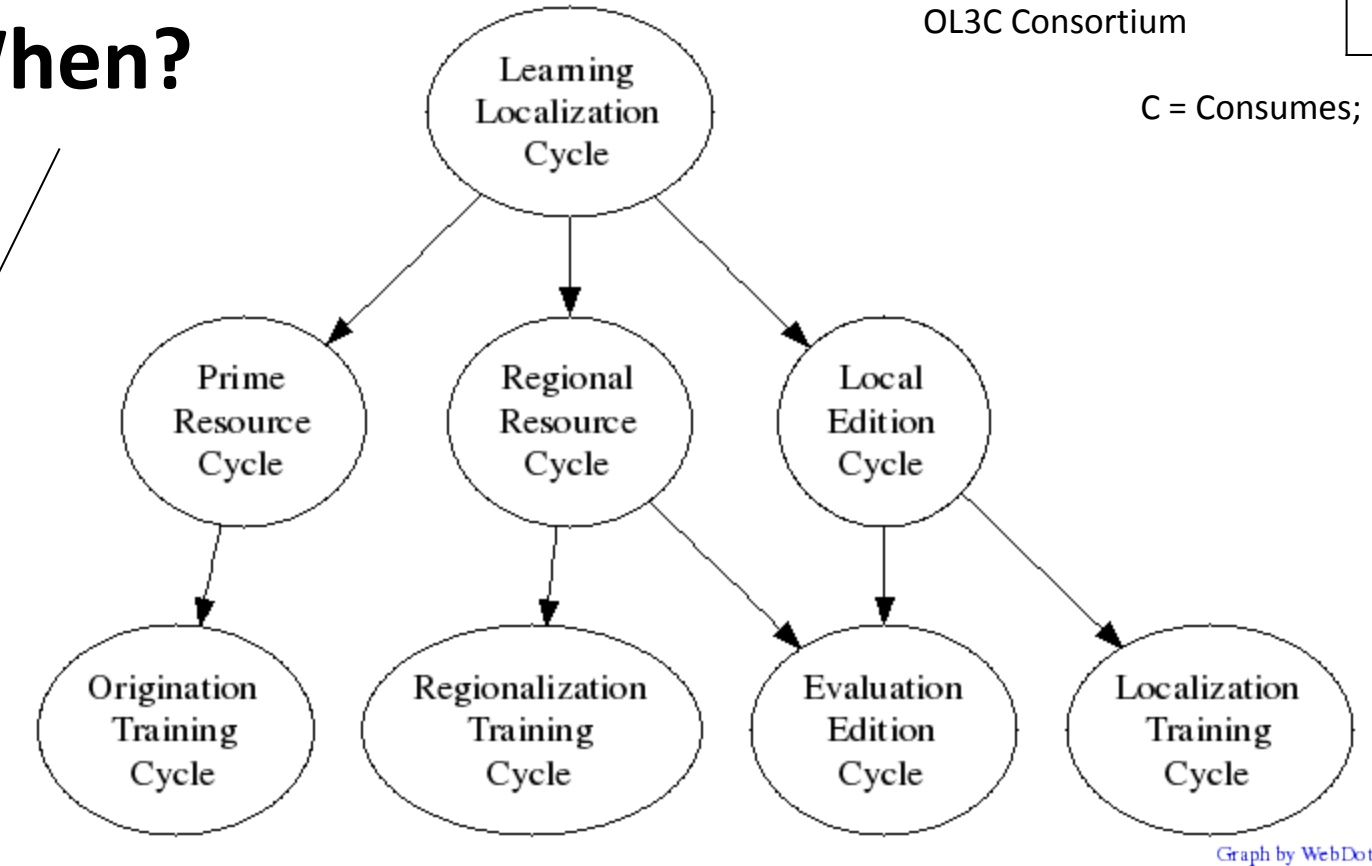
**Location Model:** At the center of the location model for the OL3C is the **Open Library** itself. All the **Agency Sites** and **LAMP Centers** are connected to the central library via Web links. **LAMP Centers** also have communication links to the **Agency Site** of their sponsoring agency. Similarly, each **Localization Site** has communication or transport links to the **LAMP Center** that supports it.

**This organization ... Is located at ...**

Kindred Agency	Agency Site
OL3C Agency	Agency Site
LAMP Unit	LAMP Center
Community Organization	Localization Site

**Organization Model:** At the center of the OL3C's organizational model are the development agencies that have decided to participate in the OL3C (**OL3C Agencies**). Also participating are the staff at the many Localization And Micro-Publishing Centers (**LAMP Units**) that a particular OL3C Agency might operate in the field. The **OL3C Consortium** is the formally organized group that sets the standards that govern the participation of an OL3C Agency and its LAMP Units. Non-participating development agencies (**Kindred Agencies**) and **Community Organizations** are clients of the OL3C Agencies and LAMP Groups in that they may find the work products of these participants in the Open Library and make use of them.

## When?

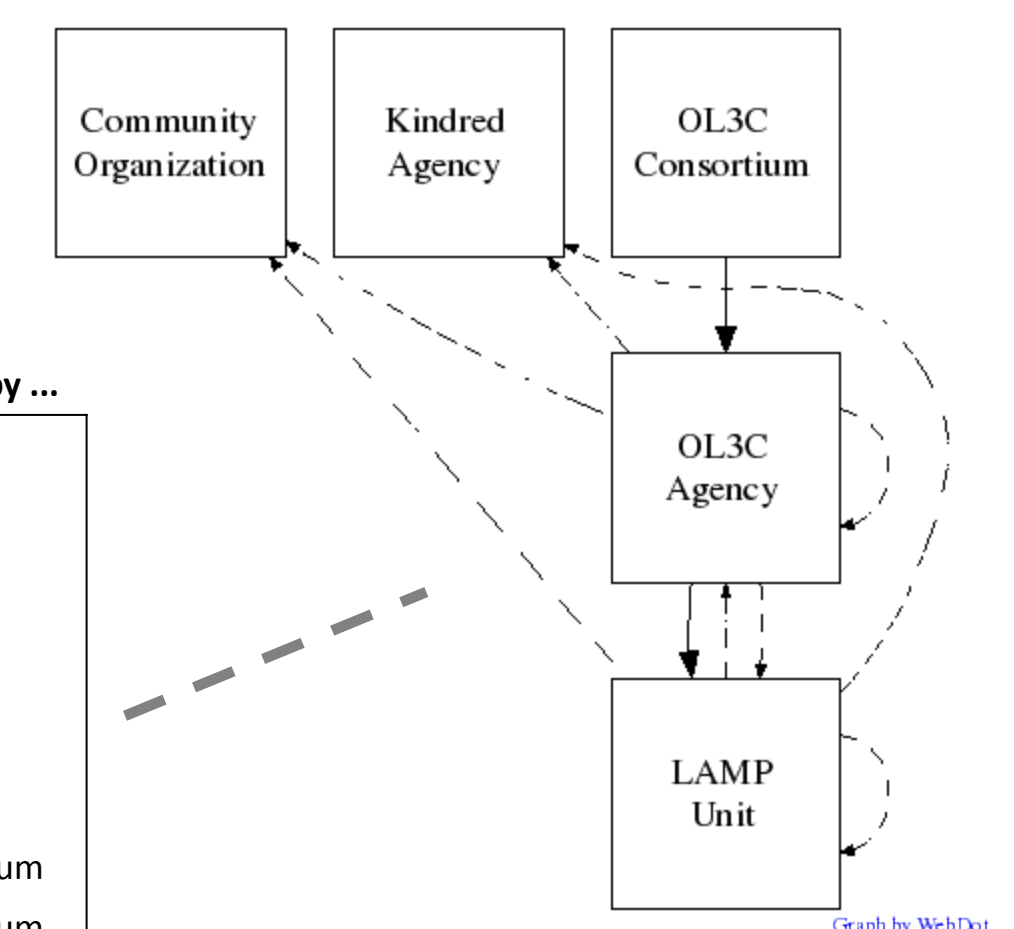


**Timing Model:** The primary repeating cycle within the OL3C enterprise is the **Learning Localization Cycle**, which involves executing the **Prime Resource Cycle**, the **Regional Resource Cycle**, and the **Local Edition Cycle** in order to create localized learning materials. Each of these in turn spawns an associated training cycle (**Origination Training Cycle**, **Regionalization Training Cycle**, **Localization Training Cycle**) when the participants do not know how to perform the necessary steps in the cycle. The latter two may also spawn the **Evaluation Edition Cycle** in order to perform monitoring and evaluation functions on the results of localization efforts.

**This cycle ... Is monitored by ...**

Evaluation Edition Cycle	LAMP Unit
Local Edition Cycle	LAMP Unit
Localization Training Cycle	LAMP Unit
Evaluation Edition Cycle	OL3C Agency
Prime Resource Cycle	OL3C Agency
Regional Resource Cycle	OL3C Agency
Regionalization Training Cycle	OL3C Agency
Learning Localization Cycle	OL3C Consortium
Origination Training Cycle	OL3C Consortium

## Who?



	Evaluation Edition	Local Language Edition	Prime Resource Edition	Regional Resource Edition	Shellbook Repository
Community Organization	C	C	C		
Kindred Agency		C	C	C	
LAMP Unit	C	P	C	C	
OL3C Agency	C	P	P	P	
OL3C Consortium					P

C = Consumes; P = Produces

# Open Library for Local Learning Communities - Systems Model

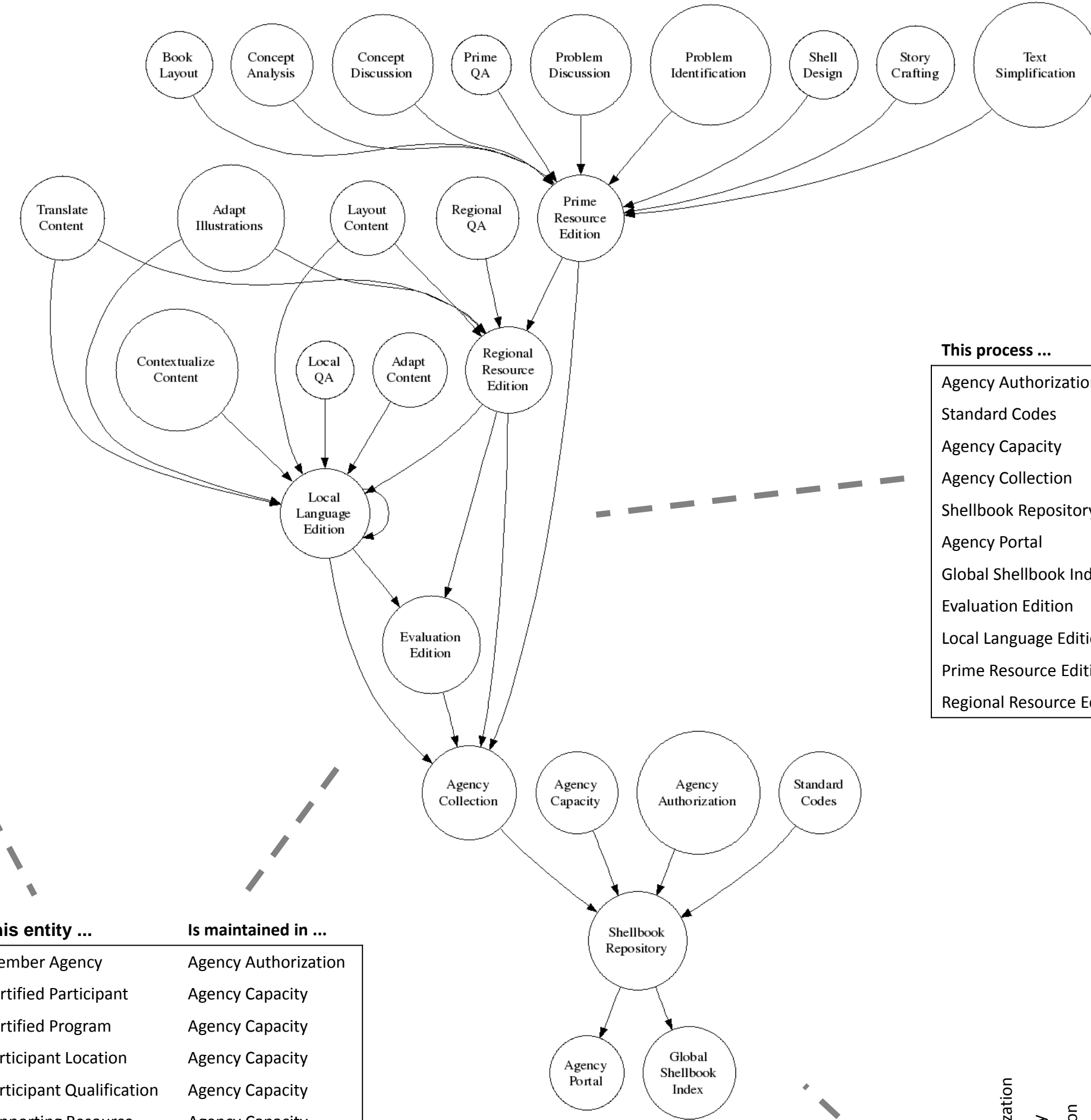
Perspective: - 7 k 0  
 Architect: Gary Simons, SIL International  
 Contributors: Mike Trainum, Life Access Technology Trust  
 Peter Clark, Arca Associates  
 Micael Olsson, World Vision International  
 Revision date: 2010-06-14

The Open Library for Local Learning Communities (OL3C) is an international partnership of agencies and individuals who are creating a worldwide virtual library to share teaching and learning materials in the Shellbook resource format. The aim is that any local community of practice or social network, especially those that have been bypassed by mainstream development efforts, may localize life-crucial information in terms of its own language, culture, ethnicity, gender, and/or age group. OL3C will also provide a collaborative environment for the research and development of localization resource standards, tools, and best practices, as well as research into the relationship of localization to language development and integral human development.

**Production Model:** The production model of the OL3C begins with **Prime Resource Editions**. These are the input to the process of deriving **Regional Resource Editions**, which in turn are the input to the process of deriving **Local Language Editions**. The latter two may also be the input to another kind of derivative which is an **Evaluation Edition** giving feedback on the edition. All of the above are the kinds of resources that enter into the process of maintaining the **Shellbook Repository**.  
 The **Agency Collection** process allows each Member Agency and its Certified Programs to upload resources into its collection within the library. When the repository is shared as the Open Library, it is fed into two main processes. The first produces an **Agency Portal** for each Member Agency so that it can function like a publisher to share the resources it has developed under its own brand. The second produces a **Global Shellbook Index** that makes it possible for users to browse and search the collection of all resources from all agencies in order to find resources that are relevant to them.

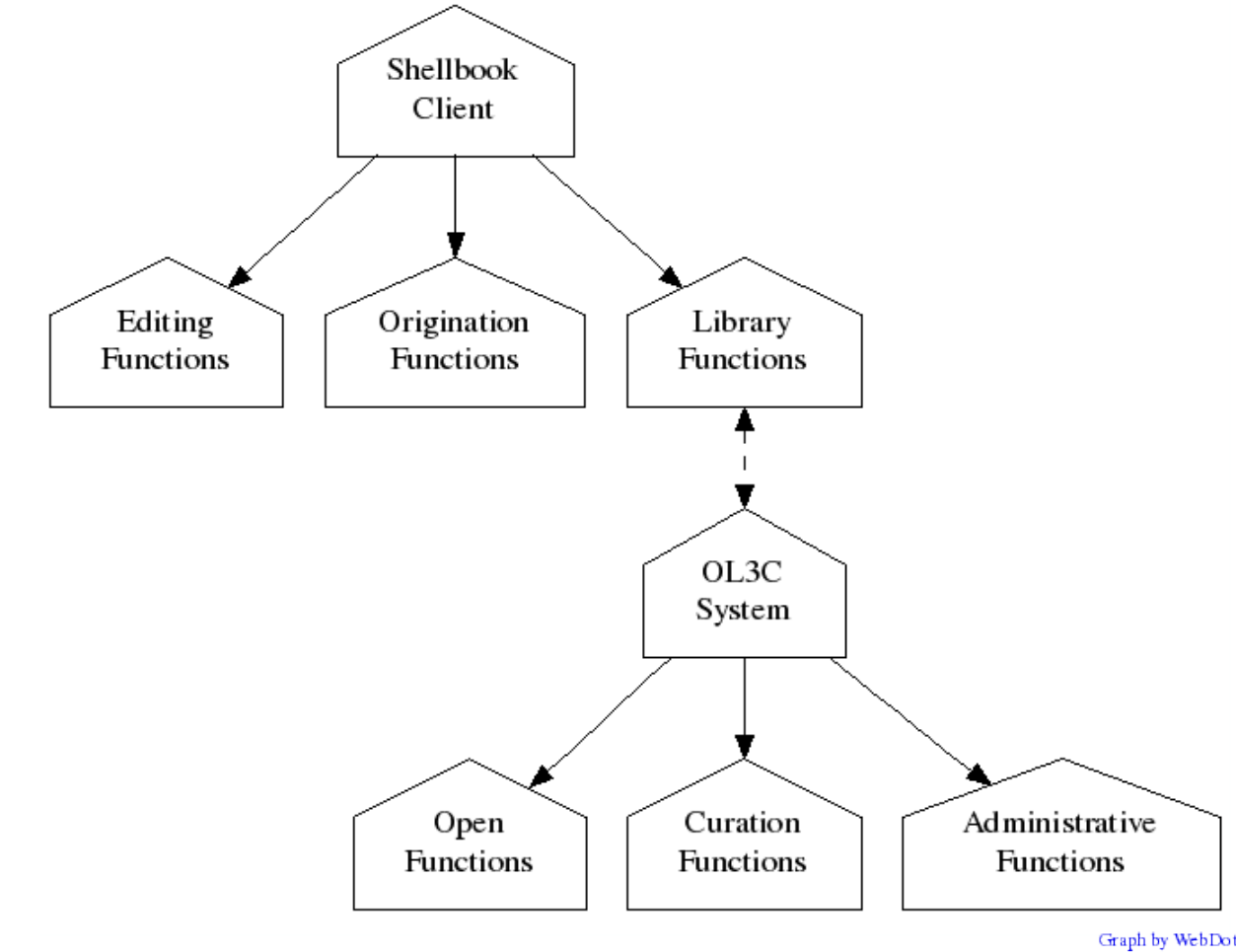
**Location Model:** The web-based application for the **OL3C System** has **Open Functions** that allow any web user to browse the library, **Curation Functions** that allow member agencies to curate their own collections, and **Administrative Functions** that allow a system administrator to manage the library. The **Shellbook Client** is the end-user program that has **Origination Functions** to create new prime resources, **Editing Functions** to develop derivative resources, and **Library Functions** to support download from and upload to the central OL3C System.

## How?



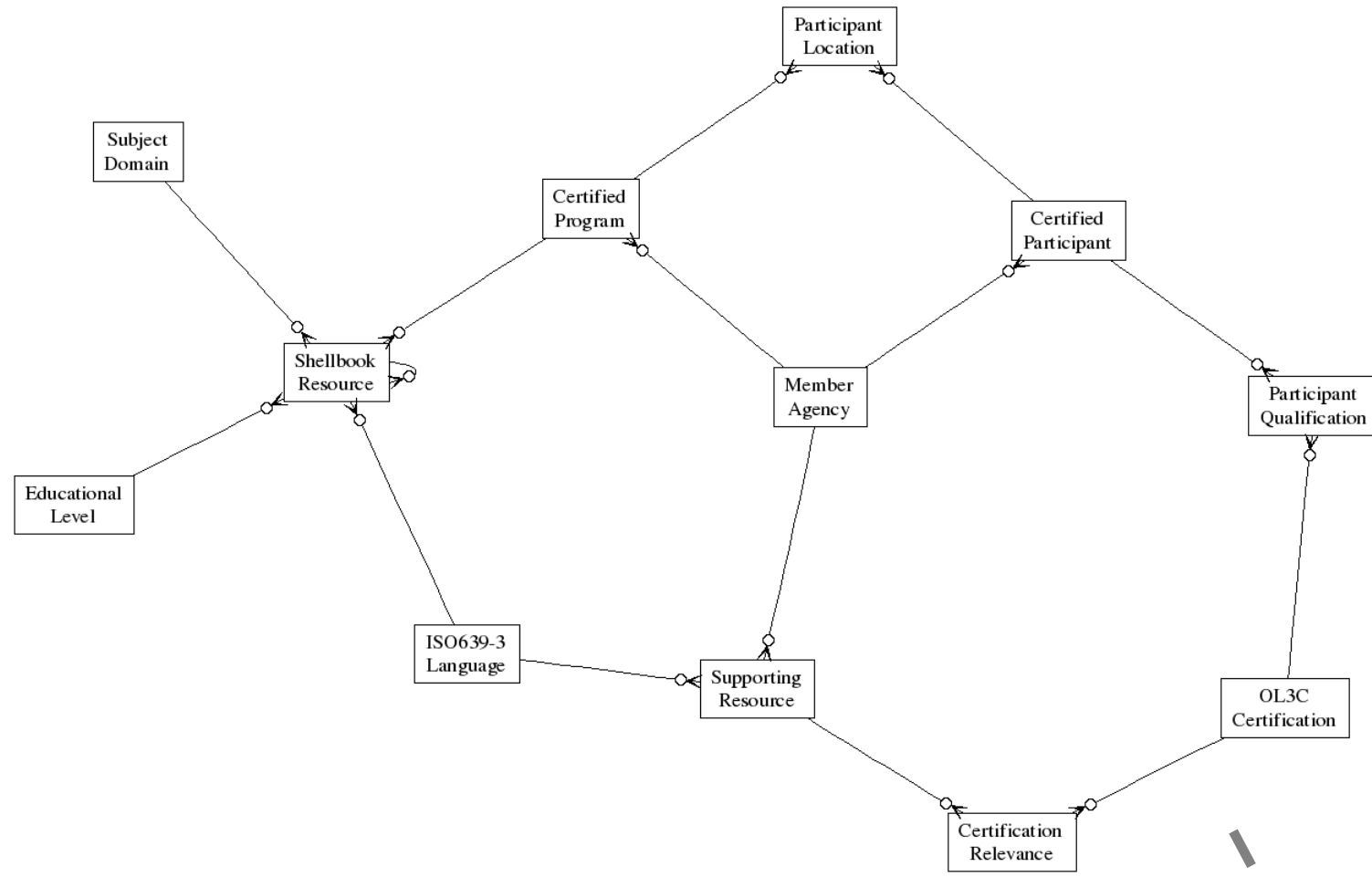
This process ...	Is run in ...
Agency Authorization	Administrative Functions
Standard Codes	Administrative Functions
Agency Capacity	Curation Functions
Agency Collection	Curation Functions
Shellbook Repository	OL3C System
Agency Portal	Open Functions
Global Shellbook Index	Open Functions
Evaluation Edition	Shellbook Client
Local Language Edition	Shellbook Client
Prime Resource Edition	Shellbook Client
Regional Resource Edition	Shellbook Client

## Where?



This role ...	Is authorized for ...
Agency Curator	Curation Functions
Library Administrator	Administrative Functions
Library Contributor	Library Functions
Library User	Editing Functions
Library User	Open Functions
Shell Originator	Origination Functions

## What?



This objective ...	Is the reason for ...
Agencies Capable	Certified Participant
Agencies Capable	Origination Training Cycle
Agencies Capable	Regionalization Training Cycle
Agencies Participating	Member Agency
Agencies Participating	OL3C Agency
Community of Practice	OL3C Consortium
Global Infrastructure	Open Library
LAMP Centers	Certified Program
LAMP Centers	LAMP Center
LAMP Centers	LAMP Unit
Library System	Shellbook Repository
Localization Facilitation	Localization Training Cycle
Localization Happening	Learning Localization Cycle
Localization Happening	Local Language Edition
Resource Sharing	Prime Resource Edition
Resource Sharing	Regional Resource Edition
Training Resources	Supporting Resource

This entity ...	Is maintained in ...
Member Agency	Agency Authorization
Certified Participant	Agency Capacity
Certified Program	Agency Capacity
Participant Location	Agency Capacity
Participant Qualification	Agency Capacity
Supporting Resource	Agency Capacity
Shellbook Resource	Agency Collection
Educational Level	Standard Codes
ISO639-3 Language	Standard Codes
OL3C Certification	Standard Codes
Subject Domain	Standard Codes

	Agency Authorization	Agency Capacity	Agency Collection	Agency Portal	Global Shellbook Index	Standard Codes
Agency Curator	R	R				
Library Administrator	R					R
Library Contributor			C			
Library User				U	U	
Shell Originator				C		

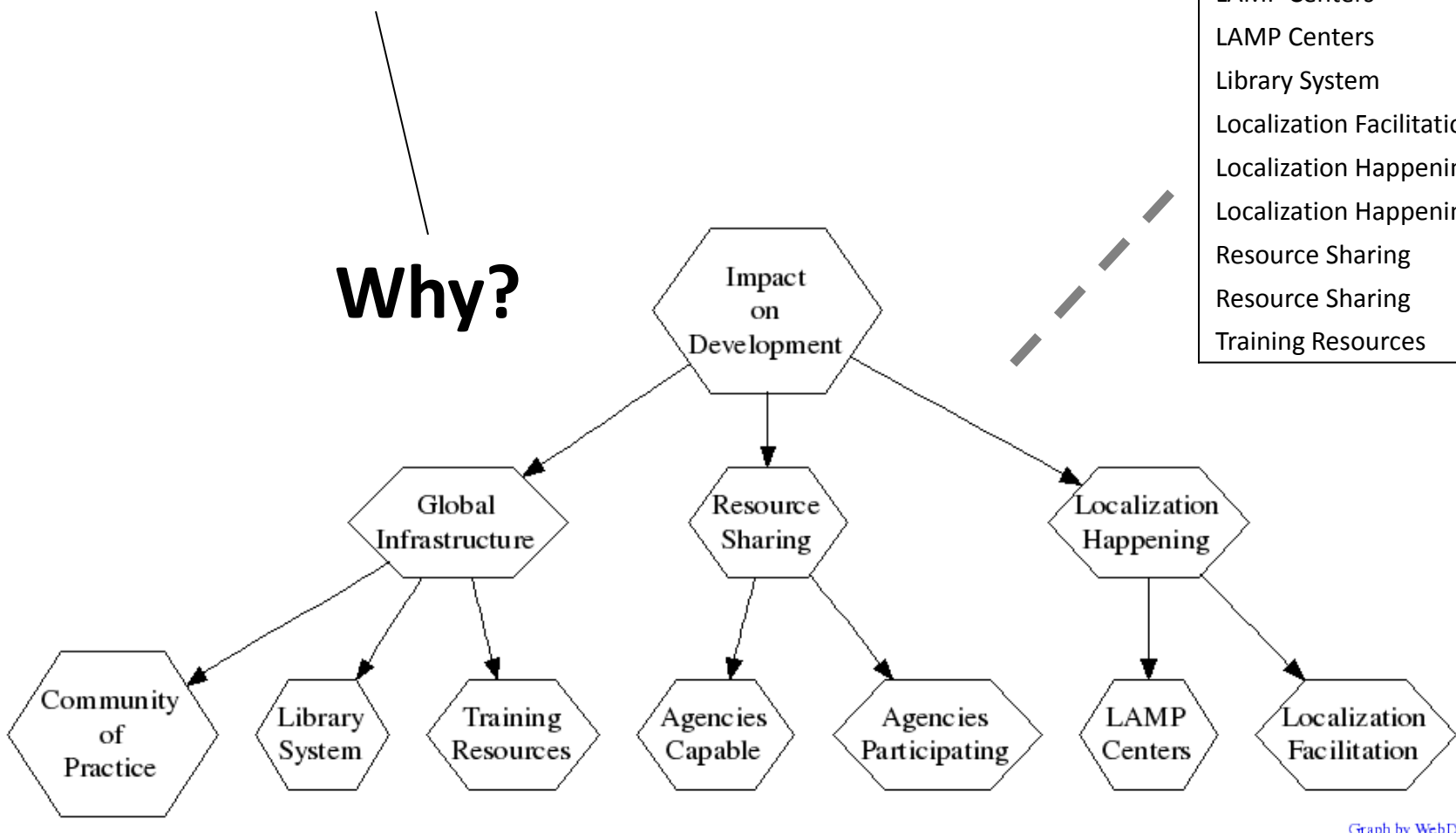
C = Contributes to; R = Responsible for; U = Uses

**Data Model:** For the sake of operating the Open Library itself, the OL3C must keep track of all available **Shellbook Resources**. For the sake of supporting the overall enterprise, the OL3C must track many other things. Central to this is the set of **Member Agencies**. Each Member Agency is then associated with the list of **Certified Programs** that it has established for developing Shellbook Resources, which are in turn linked to all the Shellbook Resources that it is responsible for creating and contributing. Each Member Agency is also associated with the list of **Certified Participants** among its personnel, which are in turn associated with particular Certified Programs by means of **Participant Location**. Member agencies may also contribute **Supporting Resources** that are shared with the other agencies to support the work of OL3C.

For each Certified Participant, the **Participant Qualifications** are tracked from the list of possible **OL3C Certifications**. In order to support discovery of relevant resources by users of the library, each Shellbook Resource is categorized by its **ISO639-3 Language**, its **Subject Domain**, and its **Educational Level**. Supporting Resources are similarly categorized by ISO639-3 Language and the OL3C Certifications they are relevant to (**Certification Relevance**).

**Motivation Model:** The ultimate purpose of the OL3C is expressed in the **Impact on Development** statement that all "left out" people will be able to participate fully in the process of their own development in terms of their own language and other aspects of identity. For this purpose to be realized, three things are necessary: a **Global Infrastructure** for localization must be functioning, the source materials for local communities to localize must be available (**Resource Sharing**), and the communities must be localizing those resources and using the results to foster learning (**Localization Happening**). The infrastructure requires a **Library System** for the open sharing of resources and results, **Training Resources** that will help participants to learn what they must know to participate, and a **Community of Practice** to define and support best practices. The vision for Resource Sharing requires that all development agencies who are promoting localized learning are participating in the OL3C (**Agencies Participating**) and have the capacity to exploit all of its solutions (**Agencies Capable**). Finally, seeing localization happen requires that member agencies establish Localization And Micro-Publishing Centers (**LAMP Centers**) and that those centers facilitate localization among local communities (**Localization Facilitation**).

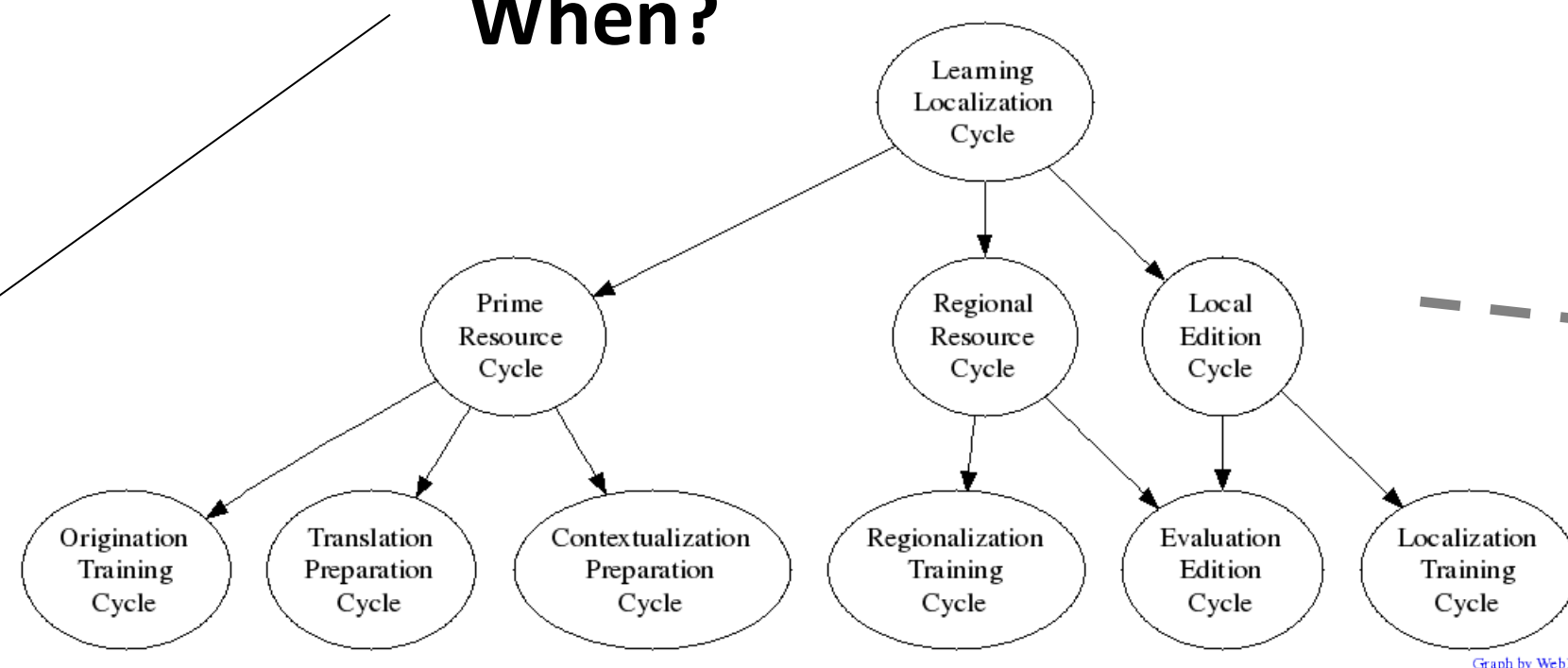
## Why?



**Timing Model:** The primary repeating cycle within the OL3C enterprise is the **Learning Localization Cycle**, which involves executing the **Prime Resource Cycle**, the **Regional Resource Cycle**, and the **Local Edition Cycle** in order to create localized learning materials. Each of these in turn spawns an associated training cycle (**Origination Training Cycle**, **Regionalization Training Cycle**, **Localization Training Cycle**) when the participants do not know how to perform the necessary steps in the cycle. The latter two may also spawn the **Evaluation Edition Cycle** in order to perform monitoring and evaluation functions on the results of localization efforts.

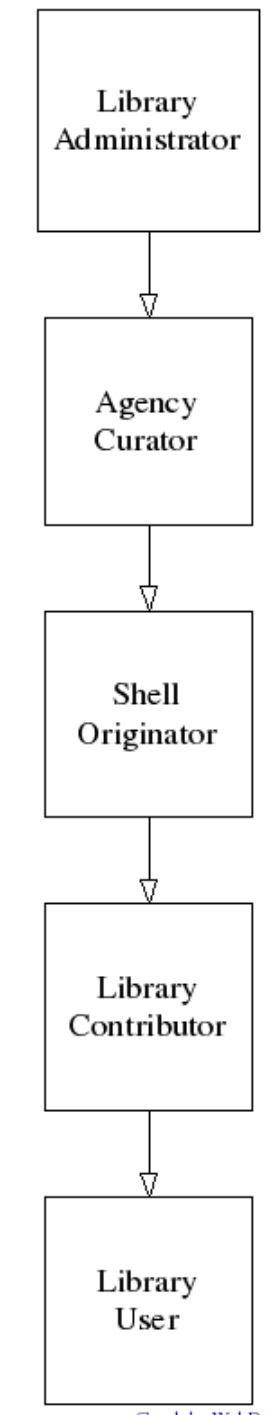
The Prime Resource Cycle involves executing a subcycle to prepare the contents before they can be entered into a shell, either the **Translation Preparation Cycle** for a resource that is meant to be translated or the **Contextualization Preparation Cycle** for a story that is meant to be contextualized.

## When?



This cycle ...	Is monitored by ...
Localization Training Cycle	Agency Curator
Origination Training Cycle	Agency Curator
Regionalization Training Cycle	Agency Curator
Evaluation Edition Cycle	Library Contributor
Local Edition Cycle	Library Contributor
Regional Resource Cycle	Library Contributor
Contextualization Preparation Cycle	Shell Originator
Prime Resource Cycle	Shell Originator
Translation Preparation Cycle	Shell Originator

## Who?



**Role Model:** Any web user can be a **Library User** and use the Open Library. A **Library Contributor** can do everything a regular user can do, plus contribute new derived resources to the library. In addition to that, a **Shell Originator** can contribute new prime resource editions. An **Agency Curator** can not only do all of the above, but also checks the work of contributors by vetting the contributions made to the collection of his or her agency. The **Library Administrator** supports all classes of users by managing the entire system.